



Rotary Hammer 40mm (1-9/16")  
HR4013C / HR4003C

Satisfy Professional's Needs



Adapted for  
SDS-MAX bits

# ADVANCED Vibration Control



**AVT & SOFT  
NO LOAD**  
ANTI VIBRATION TECHNOLOGY

Extra Comfort with unrivalled low level of vibration

Photo : HR4013C (Tool does not come with bit.)

# AVT

ANTI VIBRATION TECHNOLOGY

Comparison of Vibration level\* and Time to reach ELV (Exposure Limit of Vibration)\*\*

HR4013C	<b>5.0m/s<sup>2</sup></b>	<b>480min.</b>
Predecessor Model	7.5m/s <sup>2</sup>	213min.
Competitor "B"	10m/s <sup>2</sup>	120min.

\*It is known as the tri-axial value and value at Directive of A(8).

\*\*It means the maximum amount of vibration that an operator may be exposed to on any single day.



Adapted for  
SDS-MAX bits

Photo : HR4013C (Tool does not come with bit.)

## High performance

Drilling efficiency

**20% higher**

with 32mm diameter bit

Chipping efficiency

**45% higher**

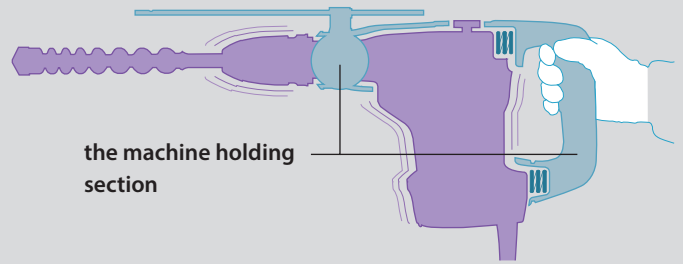
with bull point

Compared with our predecessor model

# Unrivalled low level of vibration

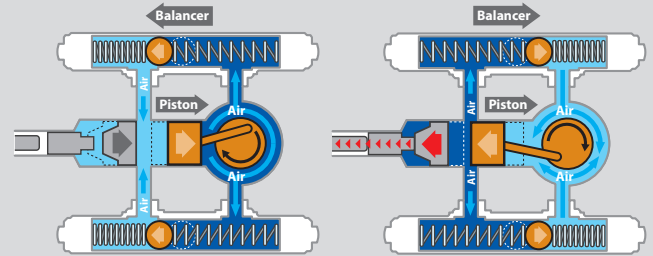
## Vibration absorbing housing (HR4013C)

This is the new AVT mechanism advanced from the current "Vibration absorbing handle". The level of vibration is further reduced by completely separating the machine holding section from the motor/transmission section



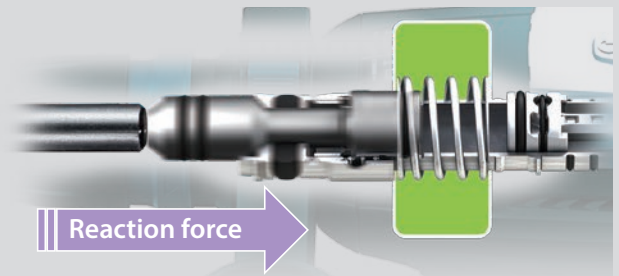
## Active dynamic vibration absorber (HR4013C)

ensures operation with extremely low vibration. allows tool design with flat body sides for better handling.

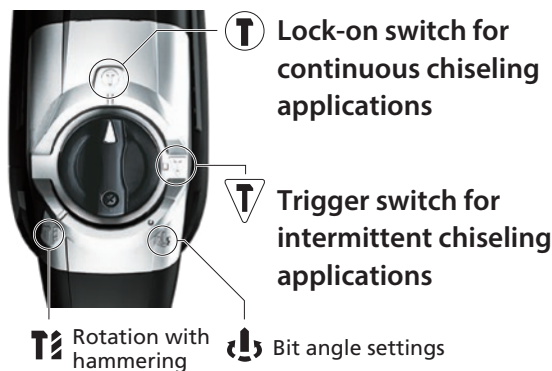


## Damper spring

absorbs reaction force caused by drill bit at the moment of impact.



## lock-on in hammering mode



## Soft no load" function (HR4013C)

- reduces vibration of tool body when idling, accordingly decreases the amount of vibration to operator's hands during a day's operation.
- minimizes deflection of bit tip from aiming point when starting chipping.

**SOFT  
NO LOAD**





**Adapted for SDS-MAX bits**

**One touch sliding chuck** for easy bit changes

**Torque limiter**

**Easy-to-operate operation mode change lever**

- The mode lock lever of the current HR4011C series is eliminated for easier mode change.
- Located on the top of the motor housing for reduced possibility of breakage even if the machine is carelessly laid.

**Soft grip** provides more comfort and control.

LED power light that indicates trouble with the electric circuit

LED service light that indicates when to replace carbon brush

Variable speed control by dial

**Electronic with:**  
Constant speed control  
Soft start for reducing start-up torque

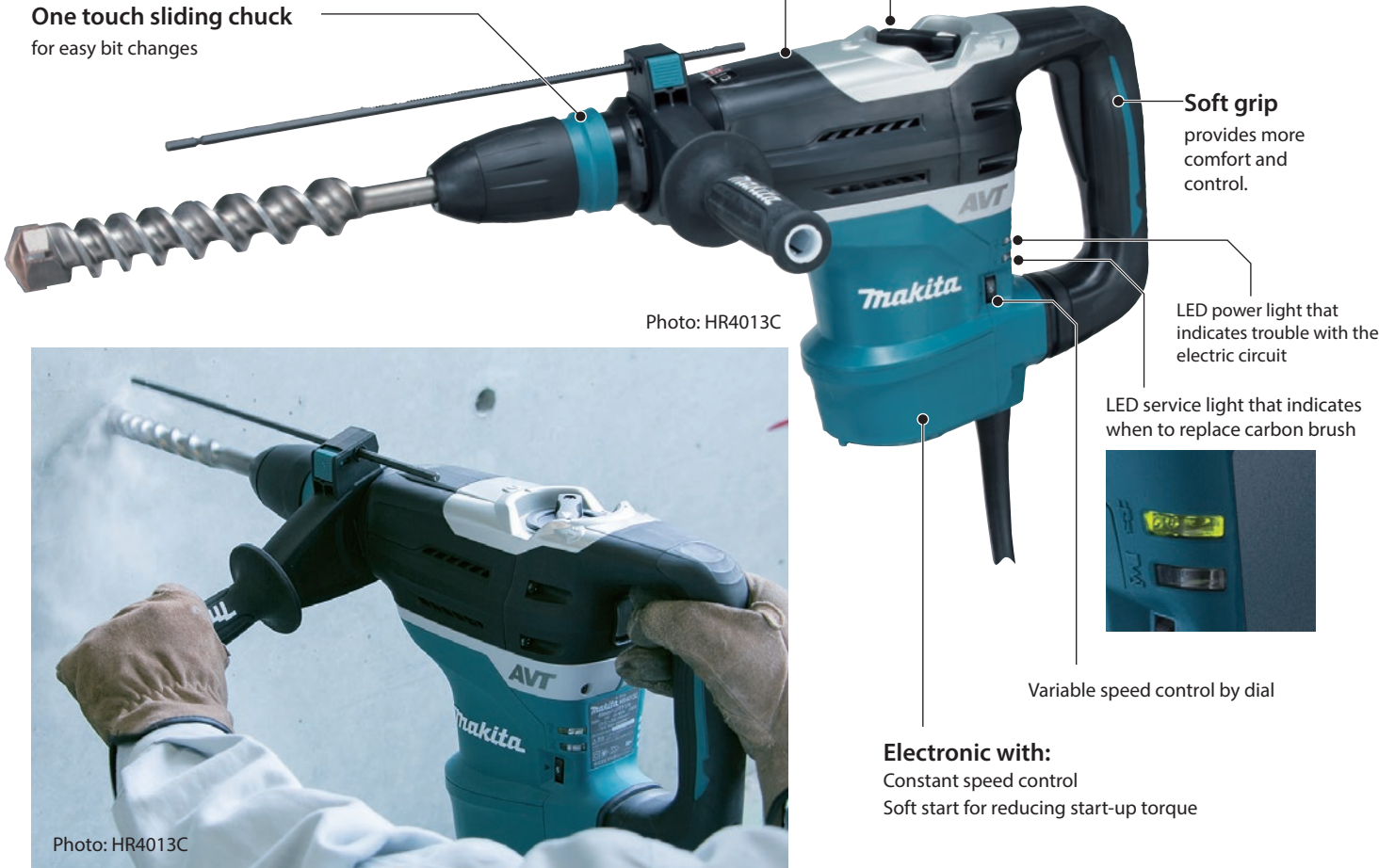


Photo: HR4013C

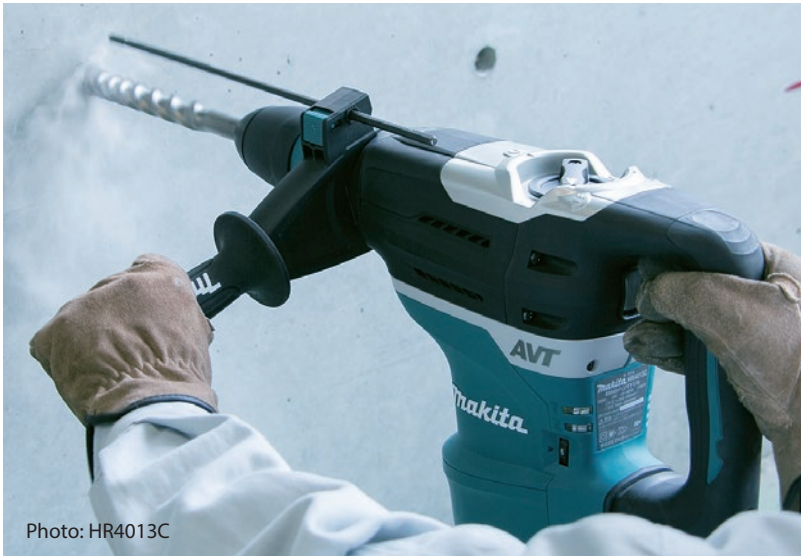


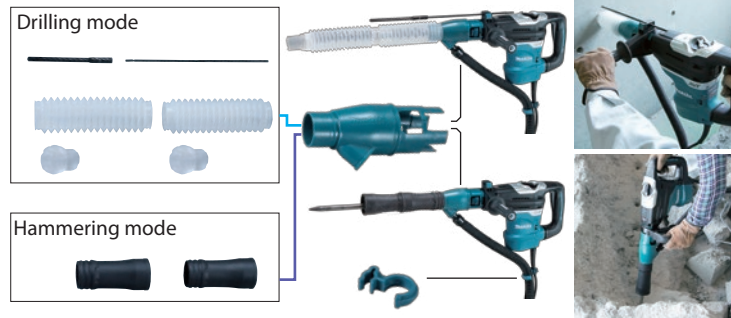
Photo: HR4013C

## Accessories

### Dust Extractor Attachment Set

The dust extractor attachment can be attached without replacing the side handle.

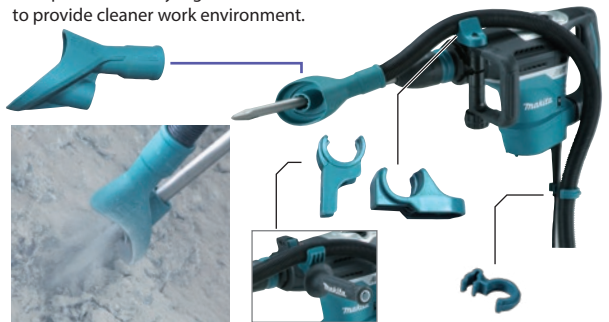
Part No. 196536-6



### Dust Extractor Attachment Set Hammering only

Connected with vacuum cleaner, this attachment is able to extract fine dust particles at very high dust extraction rate to provide cleaner work environment.

Part No. 196571-4



## Rotary Hammer

**HR4013C / HR4003C** 40mm (1-9/16") Adapted for SDS-MAX bits

350

- Double Insulation
- Constant Speed
- Variable Speed
- Soft Start
- SDS-MAX Shank
- Carrying Case
- Torque Limiter

	HR4013C	AVT & SOFT NO LOAD	HR4003C
<b>Continuous rating Input Capacity</b>	1,100W		1,100W
	Concrete (with T.C.T. bit) : 40mm (1-9/16")		Concrete (with T.C.T. bit) : 40mm (1-9/16")
	Concrete (with Core bit) : 105mm (4-1/8")		Concrete (with Core bit) : 105mm (4-1/8")
<b>Impacts per minute (ipm)</b>	1,450 - 2,900		1,450 - 2,900
<b>No load speed (rpm)</b>	250-500		250-500
<b>Dimensions (L x W x H)</b>	479x112x263mm (18-11/16"x4-3/8"x10-3/8")		479x106x263mm (18-11/16"x4-3/16"x10-3/8")
<b>Net Weight*</b>	6.8kg (15.1lbs)		6.2kg (13.8lbs)
<b>Power supply cord</b>	5.0m (16.4ft)		5.0m (16.4ft)

**Standard Equipment :** Depth Gauge, Side Handle, Bit Grease (Tool does not come with bit.)

\*weight according to EPTA-Procedure 01/2003 Items of standard equipment and specifications may vary by country or area.



**Impact drilling / Demolition  
Accessories**

**Makita Corporation**

3-11-8 Sumiyoshi-cho, Anjo, Aichi, 446-8502 Japan

PRINTED IN JAPAN BD-AJ