



Satisfy Professional's Needs

Router
RP0900 8mm or 3/8"

FURTHER IMPROVED DURABILITY



High power 900W motor



Scale label to check cutting depth

Easy-to-operate Lock lever

When the lock is released, Lock lever stays at the moved position.



3 stage cut depth adjustments

Can be placed upside down when replacing accessories or not in use.

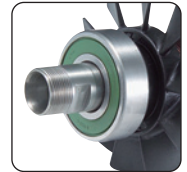
The router can stand stably on the four raised ribs on the upper end of motor housing.



Dustproof ball bearing ensures more durability

Trigger switch easily accessible with grips held

Large ball bearing ensures more durability



Accessories

Dust Nozzle

Part No. 194733-8

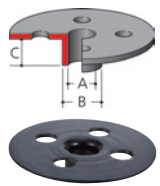


Collet Cone

Size	Part No.
8mm	763618-5
3/8"	763619-3
6mm	763636-3
1/4"	763637-1

Templet Guide

(For fast production of complicated shapes by using templet.)



A(mm)	B(mm)	C(mm)	Part No.
7.7	9.5	11.5	164379-4
9	11	13	164775-6
10	12	9	164388-3
11	12.7	13	164776-4
14	17	20	165366-6
14.5	16	13	344364-5
18	20	13	164393-0
22	24	13	165364-0
24	27	13	164470-8
25	29	15	163080-8
27	30	13	164471-6
37	40	13	164472-4

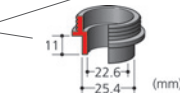
Nut M30

Part No. 252627-4



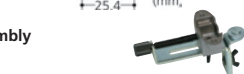
Templet Guide Adapter 30

(For B & D, Porter-Cable templet guide)
Part No. 321492-3



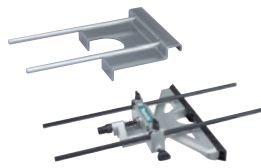
Templet Guide 25

Part No. 321812-1



Trimmer Guide Assembly

Part No. STEX122385



Straight guide

Part No. 164834-6

Straight guide with micro adjustment

Part No. 193312-9

Guide Rail Adapter

(Use with Guide Rail)
Part No. 194579-2



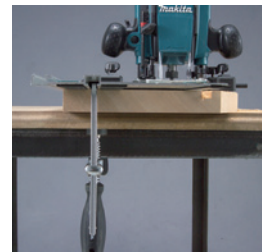
Guide Rail

(Use with Guide Rail Adapter)

Length	Part No.
1.4m	194368-5
1.9m	194925-9
3.0m	194367-7

Clamp Set

(Use with Guide Rail)
Part No. 194385-5



Router



Double Insulation



RP0900 8mm or 3/8"

106

Continuous rating Input	900W
Capacity	Collet : 8mm or 3/8"
Base	145 x 110mm (5-3/4" x 4-5/16")
No load speed (rpm)	27,000
Dimensions (L x W x H)	256 x 110 x 217mm (10-3/32" x 4-5/16" x 8-17/32")
Net weight	*2.7kg (6.0lbs)
Power supply cord	2.5m (8.2ft)

*weight according to EPTA-Procedure 01/2003

Standard Equipment Straight guide, Straight bit, Collet Cone, Wrenches

Items of standard equipment and specifications may vary by country or area.

Makita Corporation

3-11-8 Sumiyoshi-cho, Anjo, Aichi, 446-8502 Japan

PRINTED IN JAPAN Z23433-2 AJ-AI